

# **The Best Interest of the Child: Working Together to Improve the Lives of All Children**

**Saskatoon May 8, 2014**

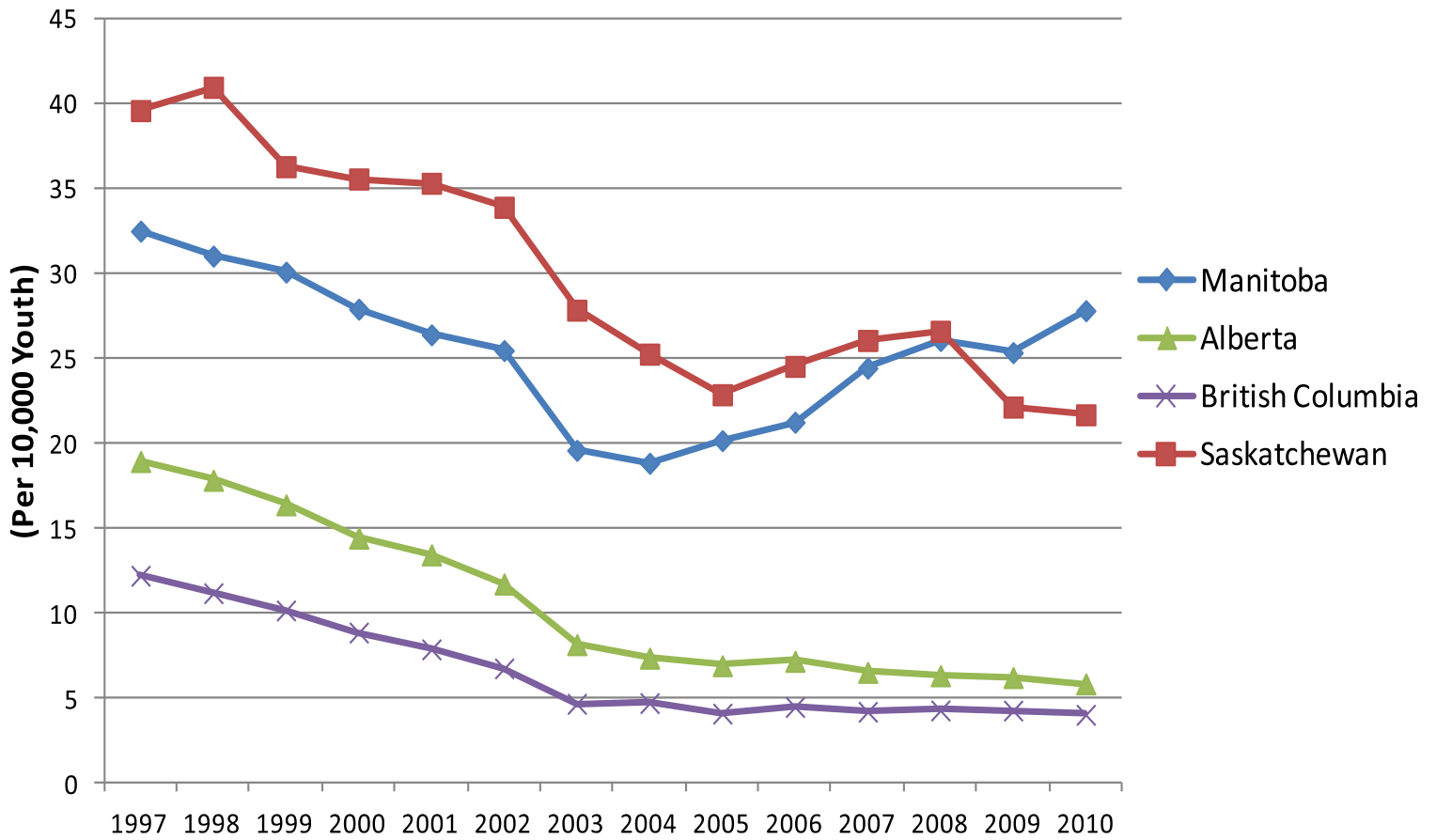
**Session 1-Our Vulnerable Children**

**Brian Rector Ph.D., R.D. Psych.**

Ministry of Justice;  
Corrections and Policing

Research and Evidence-  
based Excellence

# Youth Incarceration Rates - Western Provinces 1997-2010



# Percentage of Youth Who Received Subsequent Order

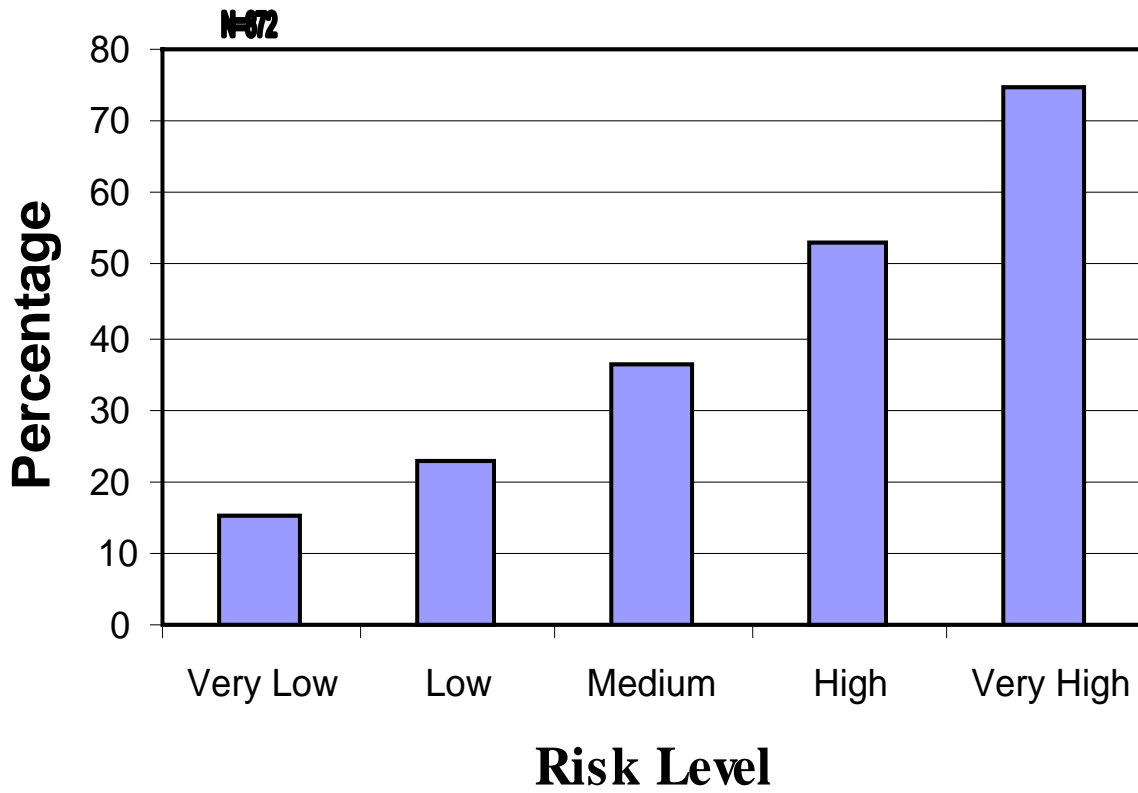
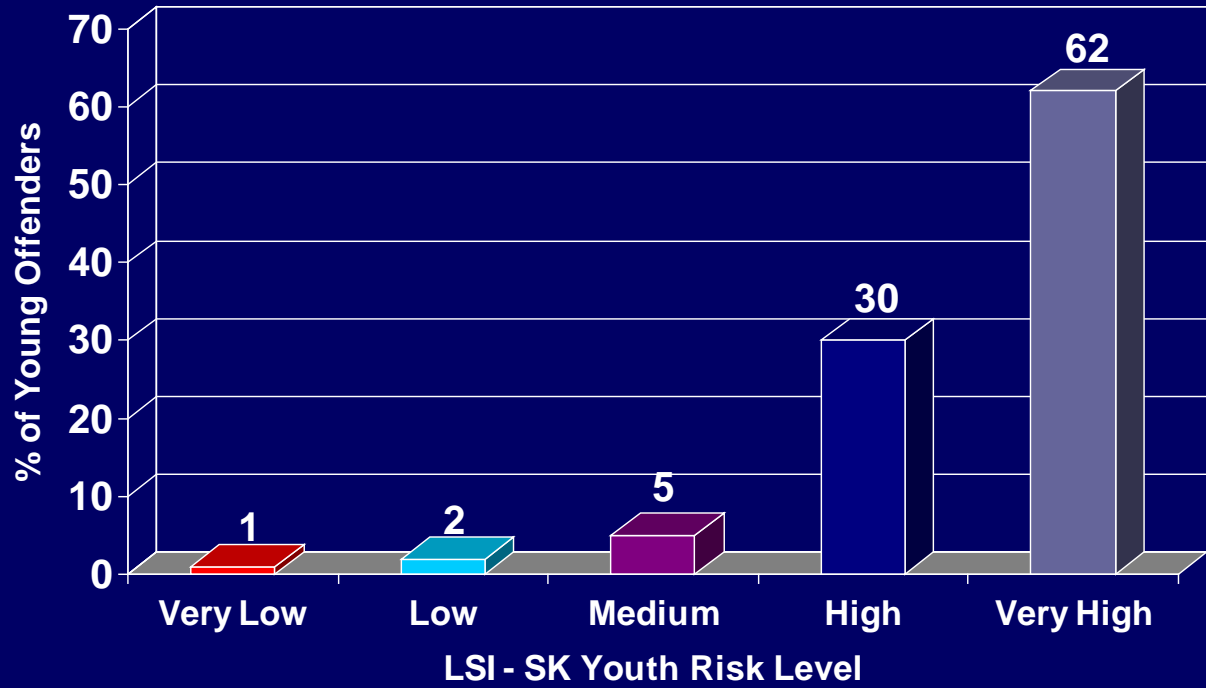


Figure 1

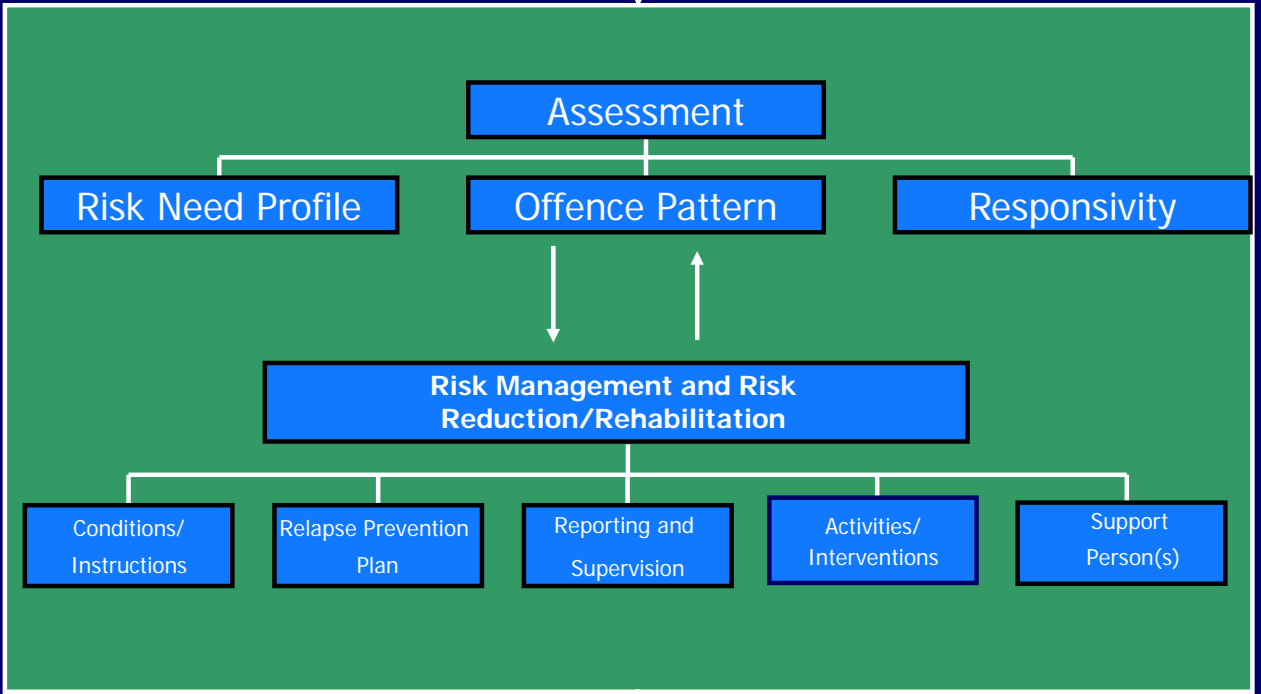
# Custody Y.O. Risk Level Profile



Issue

Individual's risk to reoffend and corresponding threat to Public Safety

Intervention

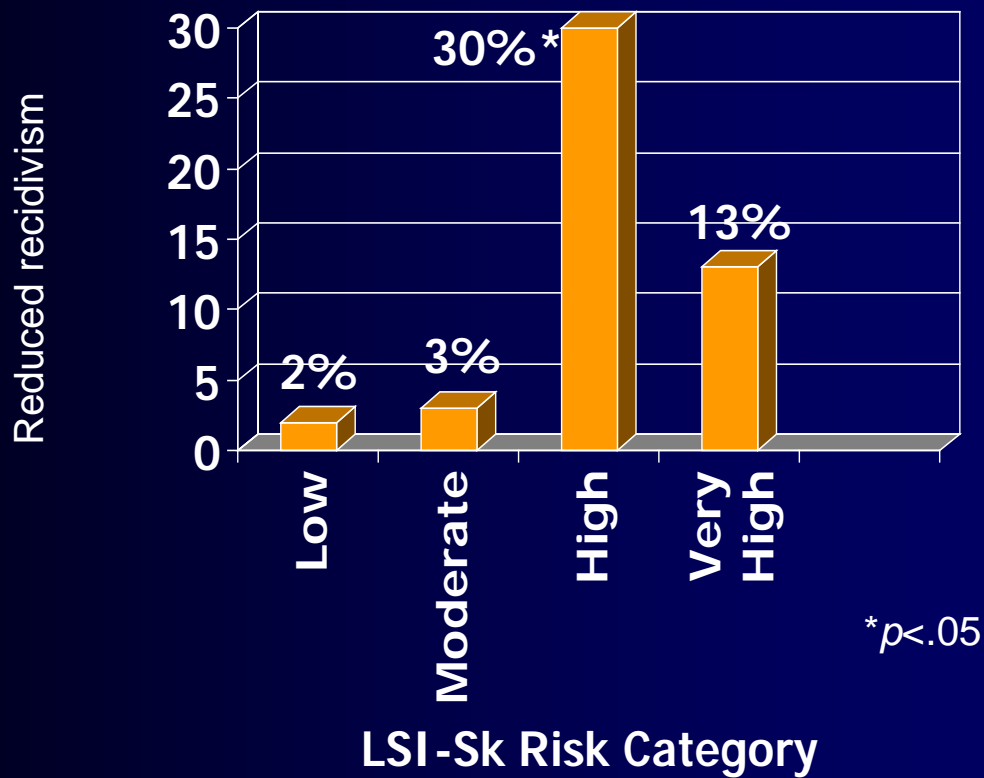


Outcome

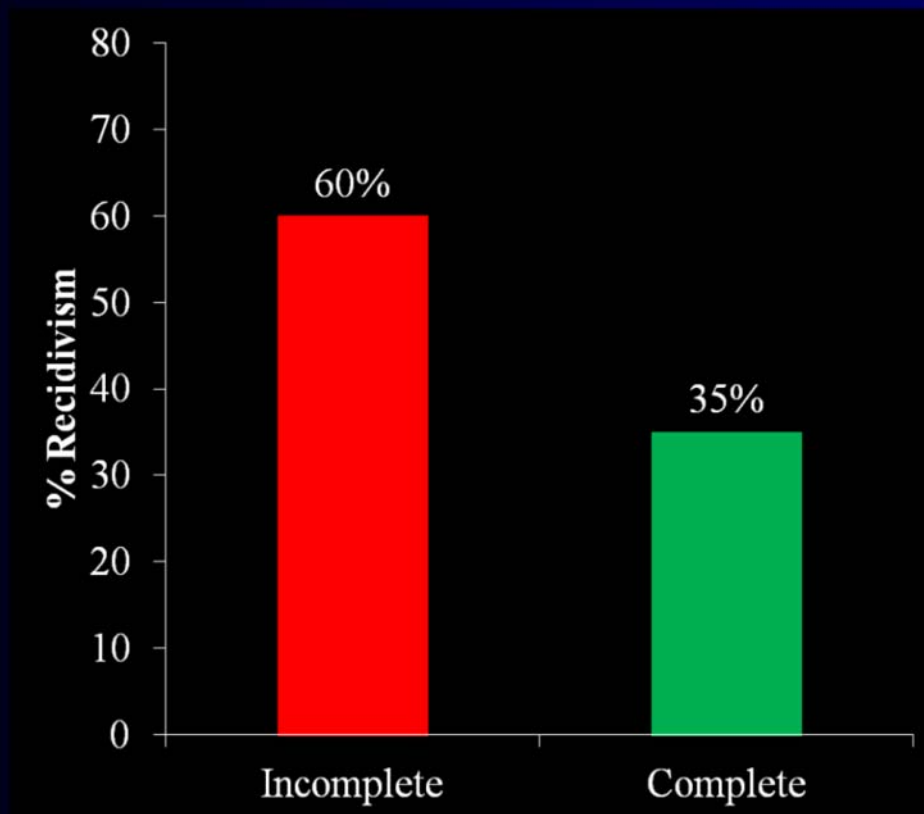
Management and reduction of risk to re-offend and corresponding advancement of Public Safety

# Appropriateness in Community Safety Planning decreases re-offending by 30% for high risk young offenders

Luong, D. & Wormith, S. (2011). Applying Risk/Need Assessment to Probation Practice and its Impact on the Recidivism of Young Offenders. *Criminal Justice and Behavior*, 38 (12), 1177-1199.



# Completeness of Case Plans and Recidivism



**42% reduction  
in recidivism for  
Very High Risk  
offenders**

# Summary

- Quality Community Safety Planning process reduces recidivism for High and Very High Risk Young Offenders

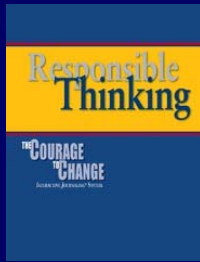


**On-Unit Programming: Risk  
reduction activities within  
Young Offender Custody  
Case Management**

# Core C2C Interactive Journals®

- Antisocial Values
- Criminal Thinking
- Criminal Peers

- Low Self-Control
- Substance Abuse
- Dysfunctional Family Ties



# Offender Overall Evaluations

- Most offenders (75%-80%) thought that:
  - they were able to understand things as they were explained to them
  - they got useful feedback on their work
  - their thinking was challenged in some ways
  - they used what they learned in their daily lives (in school, on the unit, etc.)
  - that they had enough time with their case manager to share opinions, practice new skills, and ask questions

# Misconducts: Youth Custody Facility C2C Units

